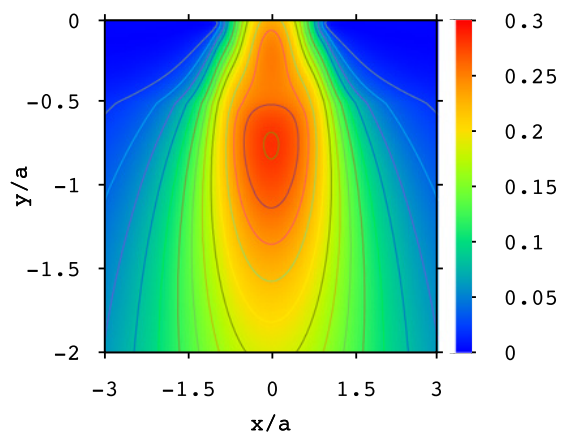
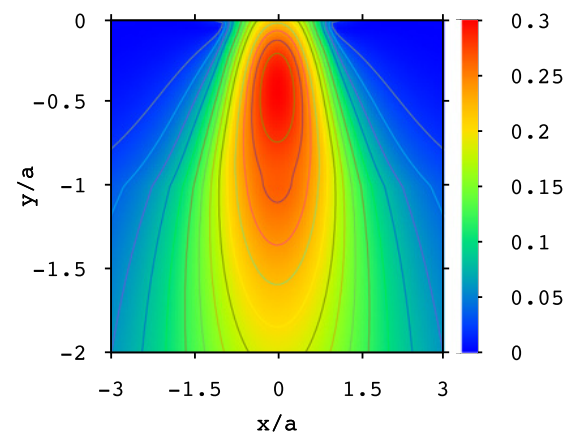


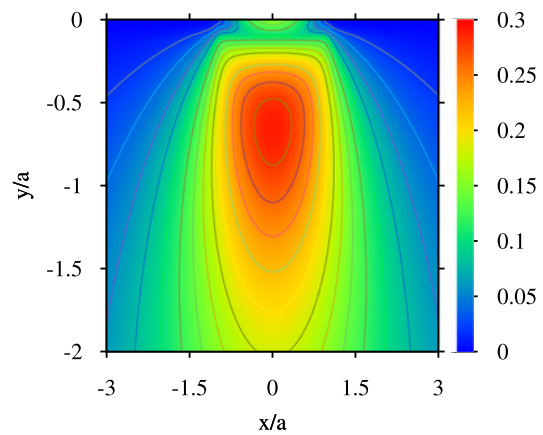
(a) $\mu_1/\mu_0 = 0.25; \hat{h} = 0.1$



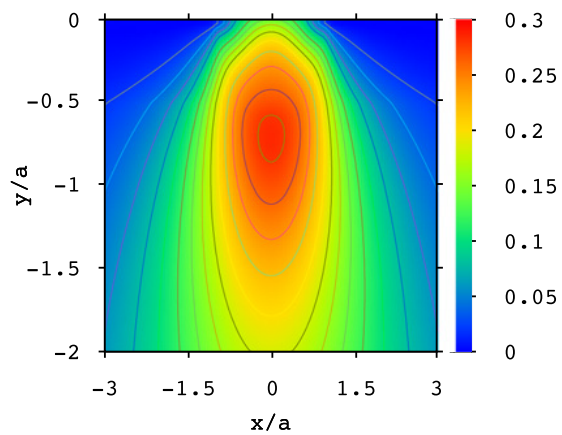
(b) $\mu_1/\mu_0 = 0.25; \hat{h} = 0.5$



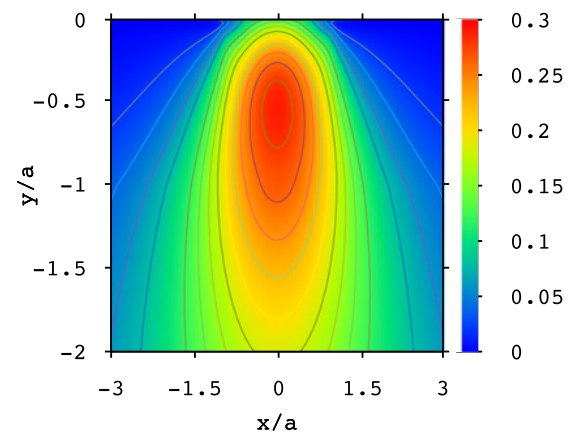
(c) $\mu_1/\mu_0 = 0.25; \hat{h} = 1$



(d) $\mu_1/\mu_0 = 0.5; \hat{h} = 0.1$



(e) $\mu_1/\mu_0 = 0.5; \hat{h} = 0.5$



(f) $\mu_1/\mu_0 = 0.5; \hat{h} = 1$

Contour plots of the sub-surface stress field for soft coatings that harden beneath the surface.